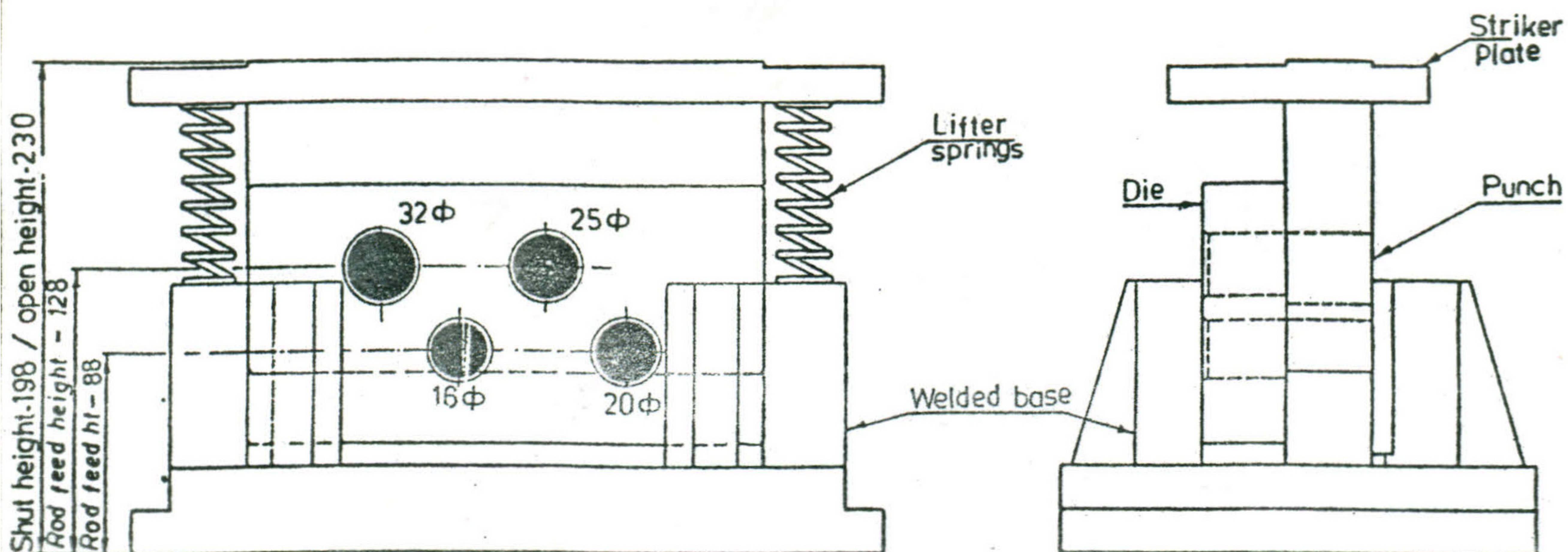
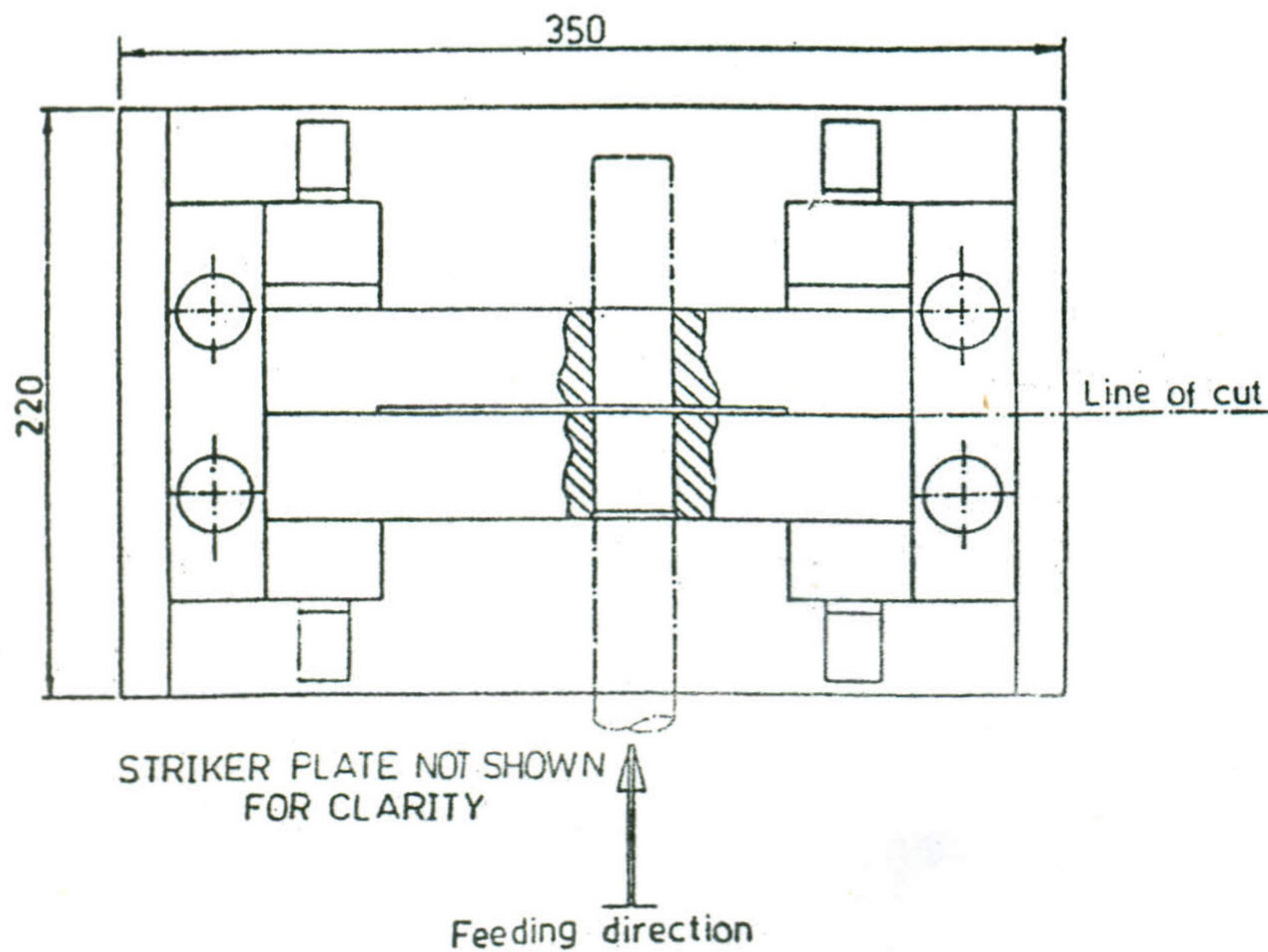


UNIPUNCH

ROD CROPPING TOOL P3280

| | |
|--|------------------------------|
| Rod dia 16 . 20 . 25 and 32 Max | |
| Shut height 198 | Rod feeding height ①88, ②128 |
| Weight 35 KG | Tonnage 30 Tons Max |
| Modifi : Other circular section(at extra cost) | |



NOTE :-

SPRINGS NOT SHOWN